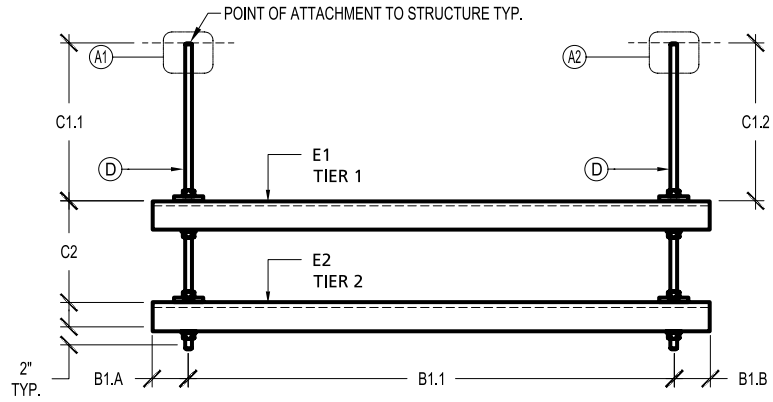






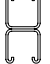

Fig. 2R2T

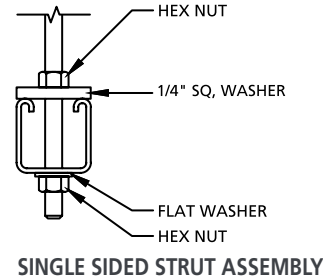
2 Rod -2 Tier Rack

Fig. 2R2T

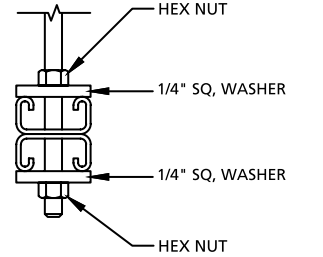


PART #: A1-A2-B1.1-B1.A-B1.B-C1.1-C1.2-C2-D-E1-E2

| A | | B | C | D | | E ¹ (Strut Options) | |
|-----|--------------------------|---|----------------------|---|----------|---|----------------|
| *00 | None | Width (Inches) | Drop Length (Inches) | *01 | 3/8" ATR | ORIENTATION | PERFORATIONS |
| *01 | PRPIP3812 ^{3,4} | | | *02 | 1/2" ATR | "U" = UP | "S" = SOLID |
| *02 | PRSDI3812 ^{3,4} | | | *03 | 5/8" ATR | "D" = DOWN | "P" = PUNCHED |
| *03 | SDI143812 ³ | | | *25 | OTHER | | "SL" = SLOTTED |
| *04 | SDI381258 ³ | E - Strut Profile Options | | | | | |
| *05 | SDI5834 ³ |  A1 13/16" x 1-5/8" 14g STRUT | |  A2 B2B 13/16" x 1-5/8" 14g STRUT | |  C1 3-1/4" x 1-5/8" 12g STRUT | |
| *06 | PIP143812 ³ |  B1 1 5/8" x 1-5/8" 14g STRUT | |  B2 B2B 1 5/8" x 1-5/8" 12g STRUT | |  C2 B2B 3-1/4" x 1-5/8" 12g STRUT | |
| *07 | PIP381258 ³ | | | | | | |
| *08 | PIP5834 ³ | | | | | | |
| *09 | RDI143812 | | | | | | |
| *10 | ROD COUPLER | | | | | | |
| *11 | VS3812-1438 ³ | | | | | | |
| *12 | VS3812-1258 ³ | | | | | | |
| *13 | VS5834-1438 ³ | | | | | | |
| *14 | VS5834-1258 ³ | | | | | | |



SINGLE SIDED STRUT ASSEMBLY

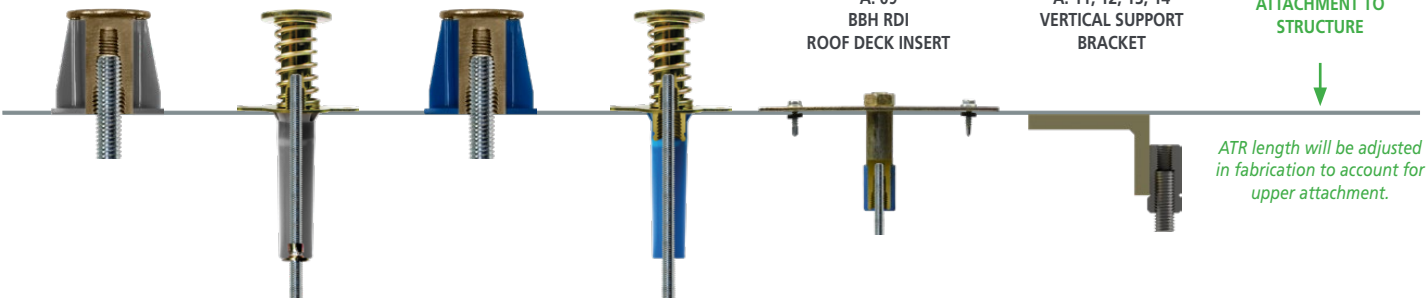


DOUBLE SIDED STRUT (B2B) ASSEMBLY

FOOTNOTES:
 1. Trapezes ordered with 3/8" and 1/2" ATR are built with 9/16" holes. Trapezes with 5/8" ATR are drilled out to accept rod.
 2. Strut options (E) nomenclature example: B1USL = B1 profile, strut orientation is up, strut perforations are slotted.
 3. ATR length will be adjusted in fabrication to account for upper attachment.
 4. ISAT Push Rod engagement mark will be added to the ATR when the PRPIP3812 or PRSDI3812 is selected.
 5. Standard Finish: Pre-galvanized strut; electro galvanized ATR and hardware standard. Special finishes available upon request.
 6. Strut Product Manufacturer: PHD Manufacturing, Inc. Substitutions available upon request.

- A: 01 BBH PUSH ROD PIP POUR IN PLACE INSERT
- A: 02 BBH PUSH ROD SDI STEEL DECK INSERT
- A: 03, 04, 05 BBH PIP POUR IN PLACE INSERT
- A: 03, 04, 05 BBH SDI STEEL DECK INSERT

- A: 09 BBH RDI ROOF DECK INSERT
- A: 11, 12, 13, 14 VERTICAL SUPPORT BRACKET



ATR length will be adjusted in fabrication to account for upper attachment.

ELECTRICAL/LOW VOLTAGE APPLICATIONS

MECHANICAL/PLUMBING APPLICATIONS